


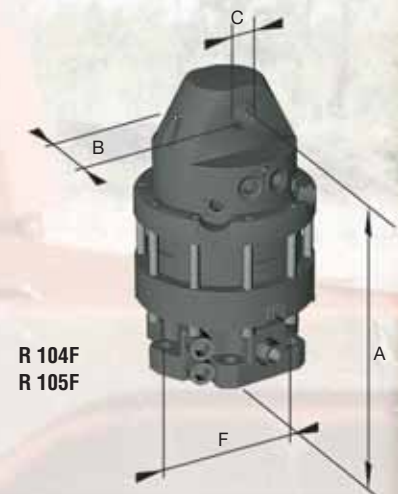
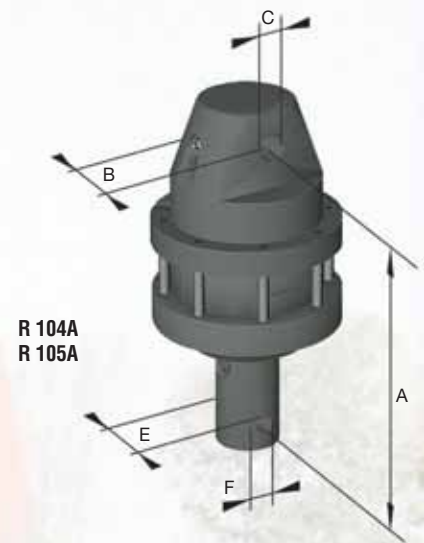
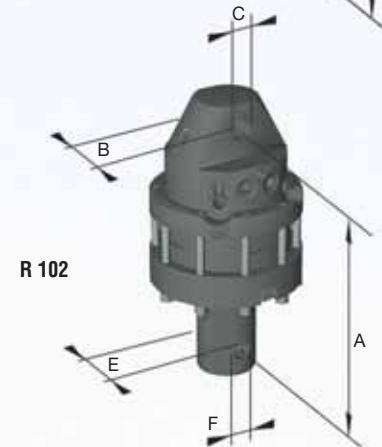
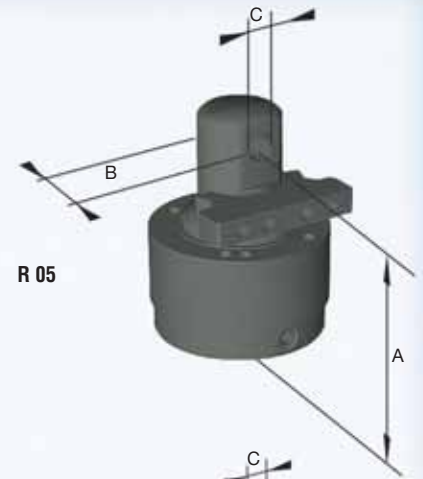
 **ROTATORI IDRAULICI**
 **HYDRAULIC ROTATORS**
 **ROTATORS HYDRAULIQUES**
 **HYDRAULISCHE DREHMOTOREN**

MODELLO • MODEL MODÈLE • MODELL		R 05	R 102	R 104A	R 104F	R 105A	R 105F
PORTATA MAX • MAX AXIAL LOAD CHARGE MAXI • MAX AXIALBELASTUNG	t	3	2	3	3	4	4
PESO • WEIGHT POIDS • GEWICHT	Kg	31	25	40	46	53	60
ROTAZIONE • ROTATION ROTATION • DREHBEREICH		Cont.	Cont.	Cont.	Cont.	Cont.	Cont.
COPPIA MAX • MAX TORQUE COUPLE MAXI • MAX DREHMOMENT	daN m	104	100	140	140	180	180
PRESS. MAX ROT. • MAX ROTAT. PRESS. PRESS MAX ROTAT. • P. MAX DREHMOTOR	bar	200	250	250	250	250	250
PRESS. MAX ATT. • MAX GRAB PRESS. PRESS MAX EQUIP. • P. MAX GREIFER	bar	300	300	300	300	300	300
CILINDRATA • OIL FLOW VOLUME CYLINDREE • SCHLUCKVOLUMEN	cm ³ /g	450	140	210	210	300	300
DIMENSIONI SIZES DIMENSIONS ABMESSUNGEN	A	232	275	320	300	341	319
	B	84	80	80	80	80	80
	C	33	26	33	33	33	33
	E	-	59	79	-	85	-
	F	-	26	26	∅173 N°6 ∅17	30	∅173 N°6 ∅17




Rozzi S.p.A.

AKSEM Makina Maden Müh. San. ve Tic. Ltd. Sti.
 Sirasogutler, Çelikoglu Cad. No:89, Çayirova-Gebze
 Tel.: 0.262.655 02 65
 Faks: 0.262.655 02 33
 E.posta: aksem@ttnet.net.tr